



® 23801 E. La Palma Ave., Yorba Linda, Ca 92887 Ph. 714.692.8180, Fax. 714.692.5016

www.cobrausa.com

Items Supplied >

1 - K&N® CONE AIR FILTER
1 - HOSE CLAMP 2 - BREATHER HOSES
1 - PLATED TUBE ASSEMBLY
1 - BILLET ADAPTER PLATE
1 - BACKING PLATE
1 - INTAKE GASKET
2 - BREATHER BOLT, 3/8"-16 X 1" W/ TEFLON SEALANT
3 - BOLT, 1/4"-20 X 1-1/8", BUTTONHEAD W/ LOCK PATCH
3 - FLAT WASHER
1 - LARGE O-RING
1 - SMALL O-RING

Application(s) >

HARLEY:
DRESSER 2008-16
SOFTAIL(THROTTLE BY WIRE) 2016

NOTE: DOES NOT FIT CVO OR S MODELS.

Instruction Manual >

606-0100-06

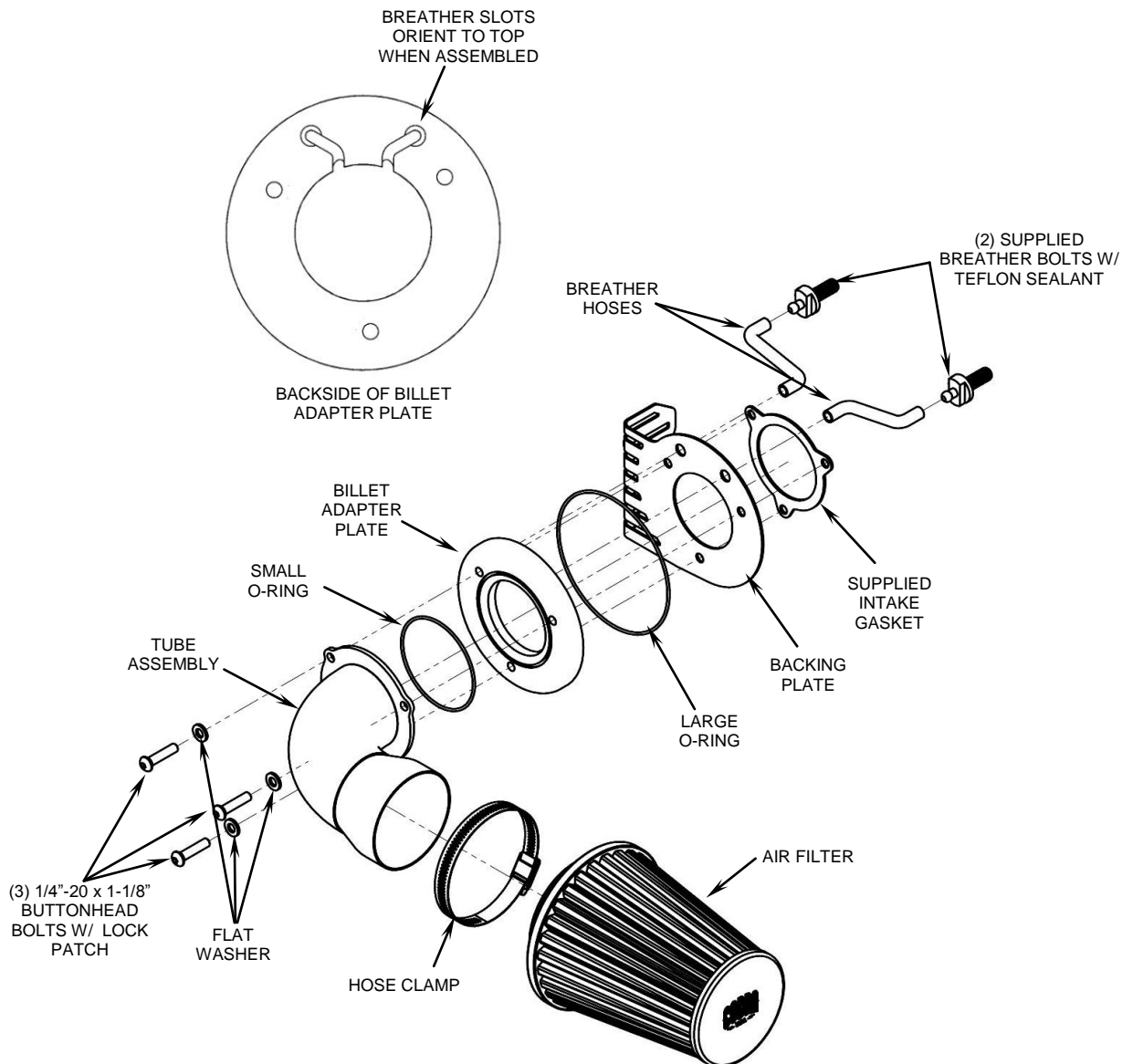
Page 1 of 2

Read all instructions carefully and completely before installing your new air intake.

1. Remove the allen bolt from the center of the stock air cleaner to remove the cover. Remove the (3) bolts securing the formed bracket located on top of the air filter. Then remove and discard the air filter, air box and seals/gaskets.
2. Remove and discard the (2) stock breather bolts, (2) stock o-rings, and (2) stock breather hoses from the cylinder heads.
3. Install the supplied breather bolts into the cylinders. See **FIGURE 1**. Tighten securely.
4. Insert the end of the breather hoses through the holes in the supplied backing plate so that there is about 1/8" sticking out the other side. This will get pushed into the billet adapter plate in later steps. See **FIGURE 1**.
5. Place the small and large o-rings onto the grooves of the billet adapter plate. A small amount of grease may be needed to hold the o-rings into position. See **FIGURE 1**.
6. Starting with the tube assembly, stack all the parts together in the proper order according to **FIGURE 1**. Make sure the breather hoses are pushed into the billet adapter plate fully and that the o-rings are seated properly in the grooves of the billet adapter plate.
7. While holding that assembly together with one hand, insert the (3) supplied 1/4"-20 x 1-1/8" buttonhead bolts through the flat washers, tube assembly flange and all other components. See **FIGURE 1**.
8. Then align all the components with the throttle body and start threading the (3) buttonhead bolts into the throttle body. Tighten the three bolts evenly.
9. Attach the stock breather hoses to the breather bolts in the cylinder head.
10. Place the supplied HS-48 clamp around the rubber boot of the K&N® filter so that the clamp screw will be on the inside and facing down. Then slide the filter onto the tube as far as it will go. Align the logo on the front cover so that it is level with the ground and tighten the clamp. See **FIGURE 1**.
11. Verify all the bolts are tight and then wipe off any fingerprints with a clean microfiber cloth.

CONTINUED ON PAGE 2

DISCLAIMER: NOT LEGAL FOR SALE OR USE IN CALIFORNIA ON ANY POLLUTION CONTROLLED MOTOR VEHICLES.

**FIGURE 1**

CLEANING INSTRUCTIONS: To clean any black portions of the cone air intake system use a liquid based soap detergent, such as dishwashing soap applied with a soft cloth and rinse with clean water. Note: Avoid abrasive cleaning methods such as granular or dry cleansers, simple green, Scotch-Brite or steel wool pads. Abrasives may breach the coating and shorten life.

DISCLAIMER: NOT LEGAL FOR SALE OR USE IN CALIFORNIA ON ANY POLLUTION CONTROLLED MOTOR VEHICLES.